
EDGEWOOD

INDEPENDENT  SCHOOL  DISTRICT

San Antonio

Lone Star Governance

MONTHLY MONITORING REPORT – MARCH 27, 2018

March 2018 Monitoring Report

Student Outcome Goal 2 - The percentage of students in grades 3-8 who meet standard on reading STAAR will increase from 61% to 68% by the end of school year 2022 (Baseline - 2017 STAAR English, STAAR Spanish and STAAR Alternative 2).

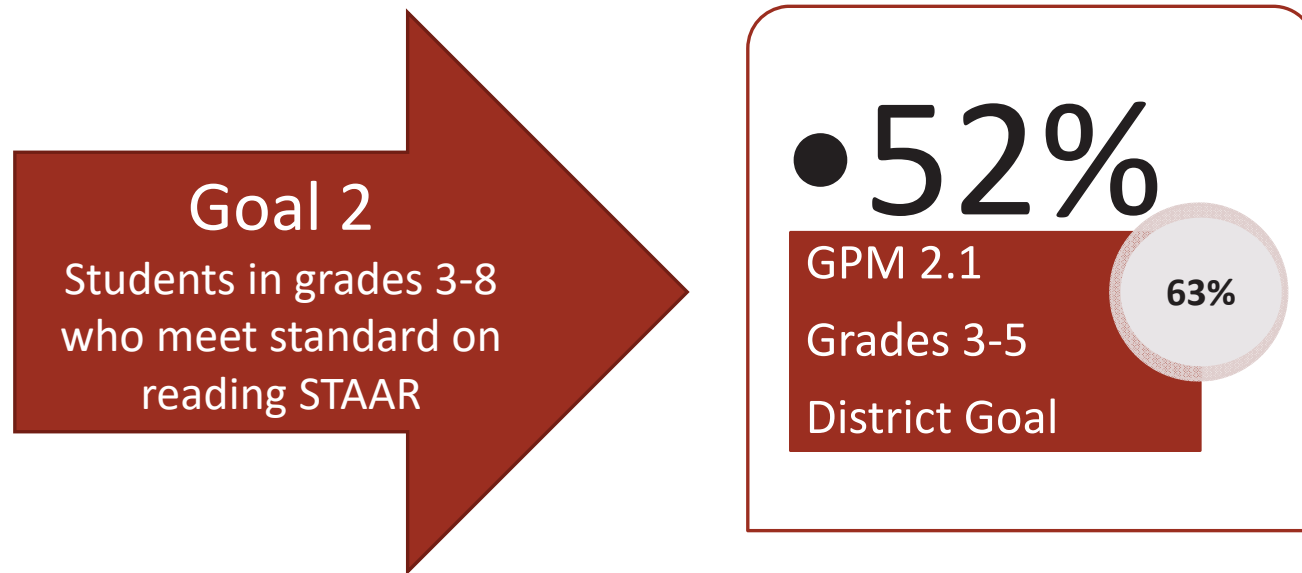
Annual Target: School Year 2017-2018 = 62%

Goal Progress Measure 2.1 -The percentage of students in grades 3-5 who meet standard on reading STAAR will increase from 62% to 68% by the end of school year 2022.

Annual Target: School Year 2017-2018 = 63%



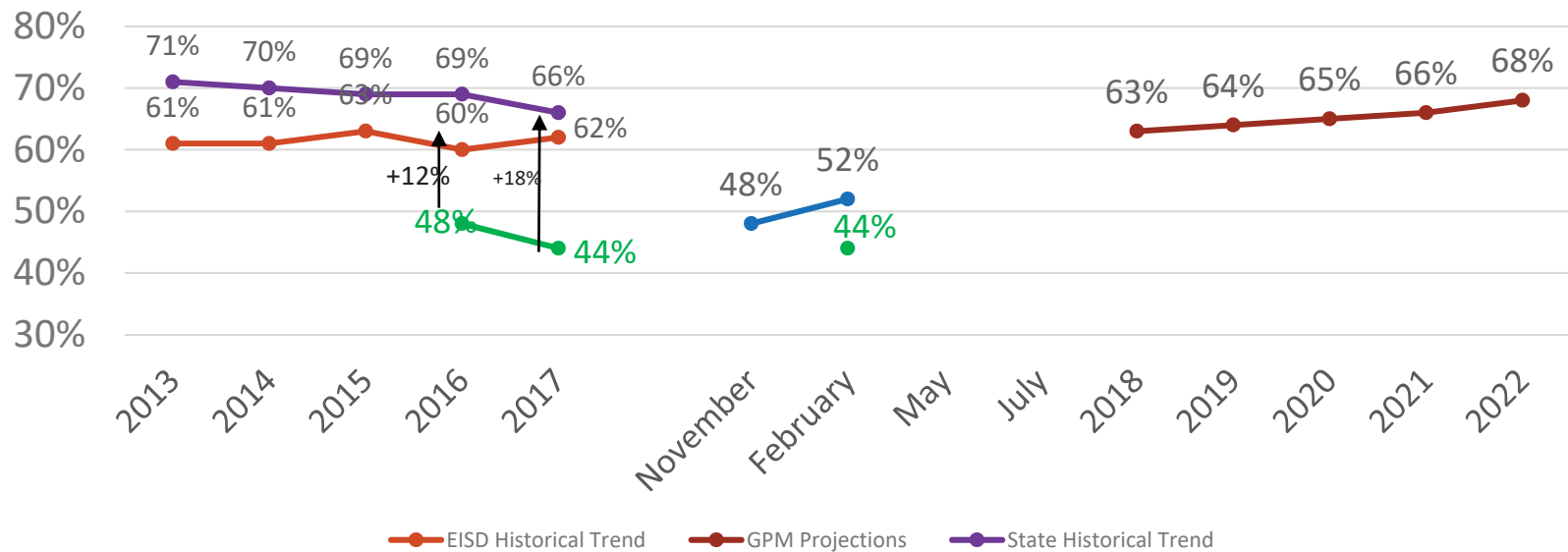
March 2018 Goal Progress Measures



February 2018 Istation Data

GPM 2.1 - The Percentage of students in grades 3-5 who meet standard on reading STAAR will increase from 62% to 68% by the end of school year 2022

GRADES 3-5 STAAR READING MET STANDARD TREND AND GPM PROJECTION ANALYSIS



Blue line reflects Istation data. Green reflects Benchmark data.

March 2018 Monitoring Report

Student Outcome Goal 2 - The percentage of students in grades 3-8 who meet standard on reading STAAR will increase from 61% to 68% by the end of school year 2022 (Baseline - 2017 STAAR English, STAAR Spanish and STAAR Alternative 2).

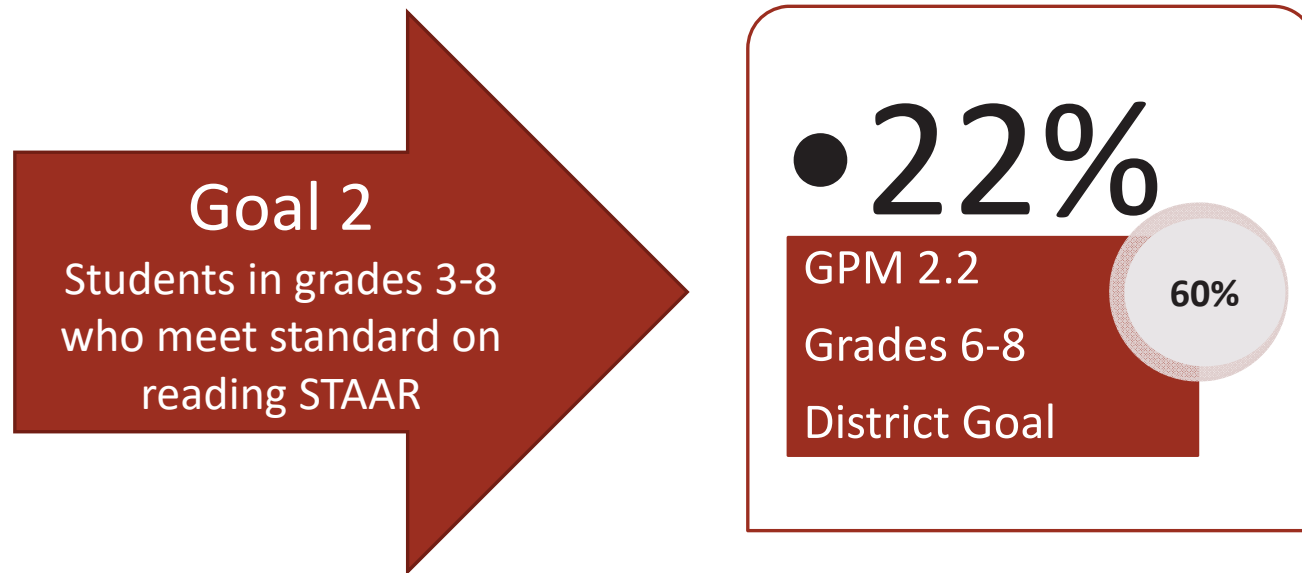
Annual Target: School Year 2017-2018 = 62%

Goal Progress Measure 2.2 - The percentage of students in grades 6-8 who meet standard on reading STAAR will increase from 58% to 68% by the end of school year 2022.

Annual Target: School Year 2017-2018 = 60%

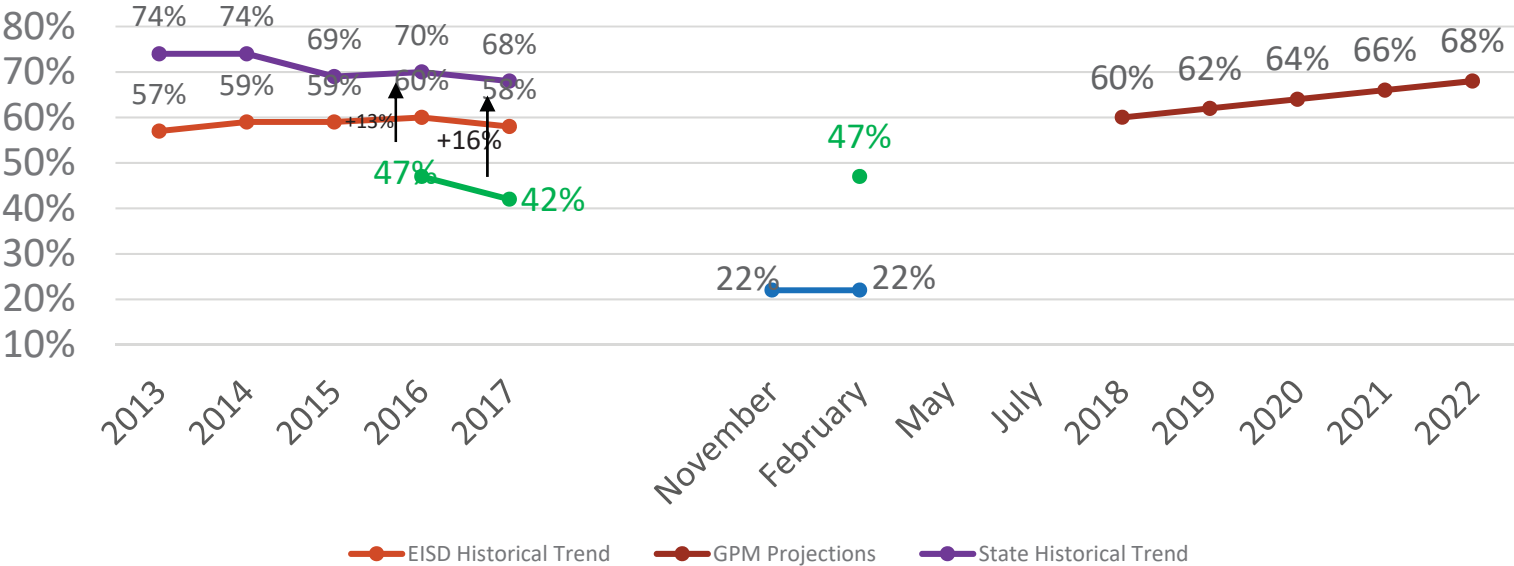


March 2018 Goal Progress Measures



GPM 2.2 - The Percentage of students in grades 6-8 who meet standard on reading STAAR will increase from 58% to 68% by the end of school year 2022

GRADES 6-8 STAAR READING MET STANDARD TREND AND GPM PROJECTIONS ANALYSIS



March 2018 Monitoring Report

Student Outcome Goal 3 - The Four-Year Longitudinal Graduation Rate (Graduated, Continued in School, or Received GED) will increase from 87.4% (Class of 2016 reported in 2017) to 90.0% (Class of 2021 reported in 2022).

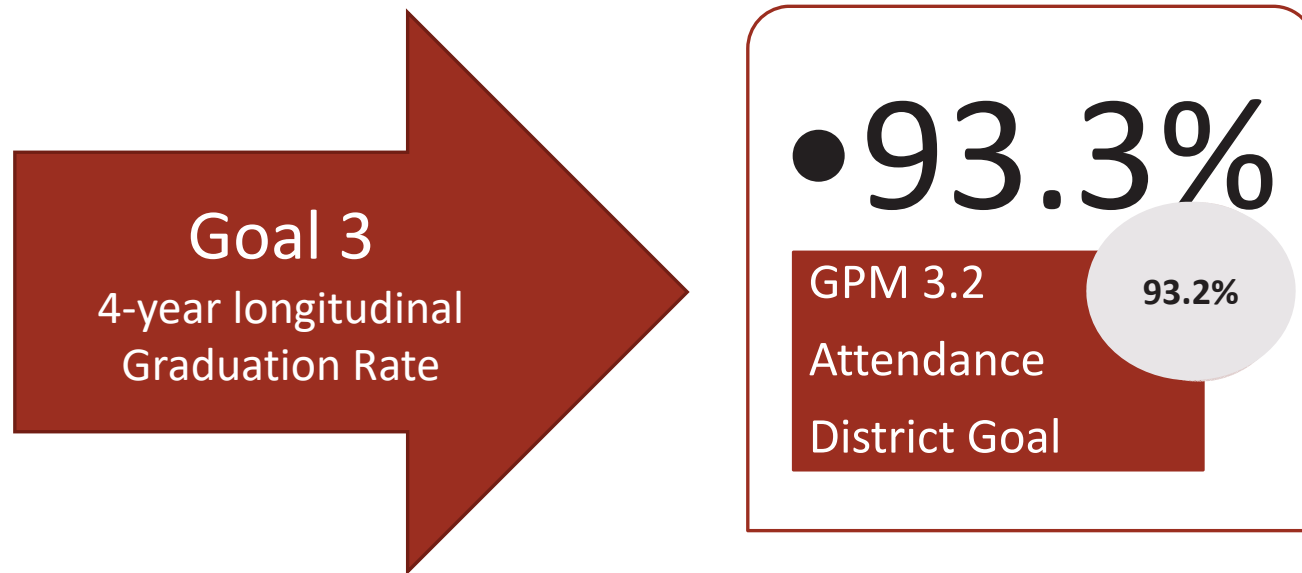
Annual Targets: School Year 2017-2018 = 88.0%

Goal Progress Measure 3.2 - The attendance rate will increase from 93.0% (reported in July 2017) to 94.5% by 2022.

Annual Target: 2017-18 = 93.2%



March 2018 Goal Progress Measures

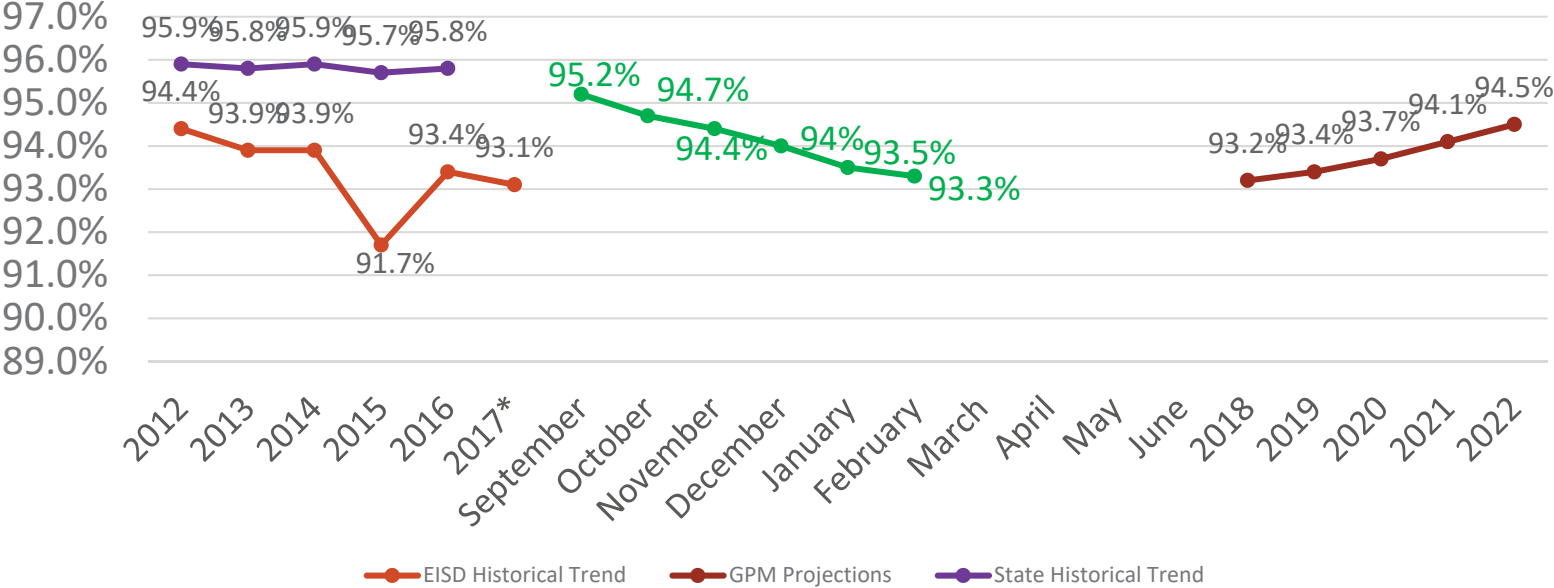


August 2017 – February 28, 2018 Data



GPM 3.2 - The attendance rate will increase from 93.1% to 94.5% by 2022.

ATTENDANCE RATE TREND AND GPM ANALYSIS



2017-2018 Student Outcome Goals Monthly Monitoring Report

Month		GOAL 1 – 56% % Students at or above Reading Level			GOAL 2 – 62% % Students Approach Grade Level or above on STAAR Reading		GOAL 3 – 88% Four-Year Longitudinal Graduation Rate	
		Gr K-1	Gr 2	Gr 3	Gr 3-5	Gr 6-8	College and Career Ready	Attendance
		GPM 1.1 - 55%	GPM 1.2 - 59%	GPM 1.3 - 53%	GPM 2.1 - 63%	GPM 2.2 - 60%	GPM 3.1 - 75%	GPM 3.2 - 93.2%
2017	September						73.8%	93.1%**
	October	38%*	50%	49%				95.2%
	November				48%	22%		94.7%
	December							94.4%
2018	January							94.0%
	February	43%	51%	52%			77.5%	93.5%
	March				52%	22%		93.3%
	April							TBD
	May				TBD	TBD		TBD
	June	TBD	TBD	TBD				TBD
	July				TBD	TBD		TBD
	August						TBD	

*1st grade only
 **2016-2017 school year
 Month reflects previous month data. For example, December Reflects November Data



2017-2018 Constraints Monthly Monitoring Report

MONTH		CONSTRAINT 1	CONSTRAINT 2	CONSTRAINT 3
		Adult convenience or preference shall not take priority over the academic progress of our students.	Student outcome goal oriented professional learning shall not decrease.	% of teachers leaving the district shall not increase.
		CPM 1.1 – 0%	Baseline TBD	CPM 3.1 – 25.9%
2017	September	1 Campus		19.7%
	October			
	November			
	December			1.47%
2018	January			
	February		53.1%	
	March			
	April			
	May			
	June		TBD	
	July	TBD		
	August			

